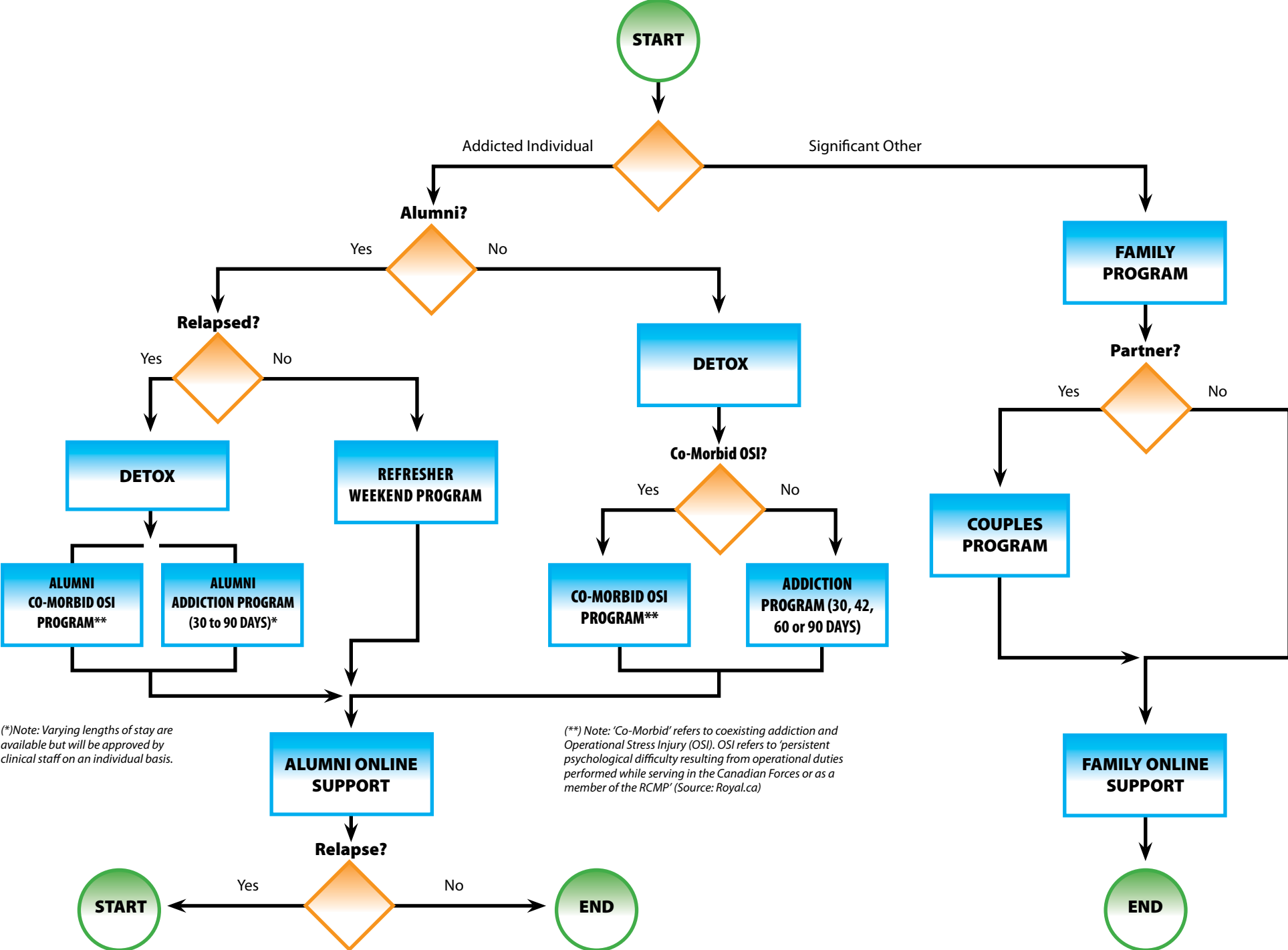


# Sunshine Coast Health Center Program Flow Chart



(\*)Note: Varying lengths of stay are available but will be approved by clinical staff on an individual basis.

(\*\*) Note: 'Co-Morbid' refers to coexisting addiction and Operational Stress Injury (OSI). OSI refers to 'persistent psychological difficulty resulting from operational duties performed while serving in the Canadian Forces or as a member of the RCMP' (Source: Royal.ca)